

Stratus® QuickStart

Overview of Stratus®

The Stratus® Cloud platform offers browser-based access to data collected from our wireless telemetry instrumentation anywhere, at any time. Send data to the Cloud from any PC. Coming soon: cloud gateway for standalone systems.

Stratus® allows you to view and analyse your data, configure actions and alerts based on realtime data and unlock the value of your data through visual tools. Stratus® is designed for ease. The user-friendly interface allows you to configure solutions in no time!

Stratus® has several components.

1. T24 Transmitter(s). Sends sensor data from strain bridges, 0-10 V, 4-20 mA and more. For more information on this section, see www.wirelessensorsystem.com/ or the T24 manual
2. Stratus® Device. This collects the data from T24 transmitters and sends it to the cloud. There are hardware and software versions. (In the future there will also be other Stratus® devices that will receive info from the platform)
3. Stratus® Platform. This receives and stores the data and allows management and viewing through
 - a. Devices. Manage your devices and their variables. Create new variables based on incoming data
 - b. Dashboards. Create dashboards to help viewing and interpreting data
 - c. Events. Create events that trigger emails, text messages and more when conditions are reached

Getting going

Install LOG100

If you don't already have LOG100 installed, you can download it from our website:

<https://www.mantracourt.com/software/t24-range/t24log100-channel-data-logging-visualisation-software>

Download and run the software, following the on-screen instructions.

Install Stratus® Plug-in

You will have been provided with a link to the Stratus® plug in for LOG100. Download and run it and follow the on-screen instructions.

Configure LOG100 project

Configure the LOG100 project as required. There is a short setup tutorial on our YouTube channel:

<https://www.youtube.com/user/mantracourt/videos>. Make sure that you think about all the channels required. There is a maximum of 50 channels per device.

Also within the Configure Project window is the Stratus button. Click this and we see this window.

Device Name

Unique identifier for this instance of the software

Bound To Project

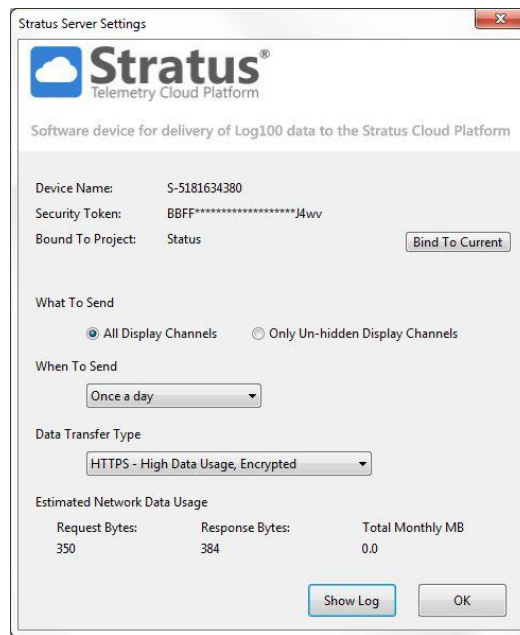
Shows which project will send data to Stratus®

What To Send

Choose whether or not to send all display channels.

Data Transfer Type

Select how the data is transferred.



Bind To Current

Select the current project to send data to Stratus®.

When To Send

How often data is sent

Estimated Network Data Use

Show Log

Opens Log window showing communications with Stratus®

Now we can configure the Stratus® part of project, including when to send and data transfer type.

Select bind to current for only the current project to send data to Stratus®. This ensures that when you open a new project it doesn't instantly start sending its data to Stratus®.

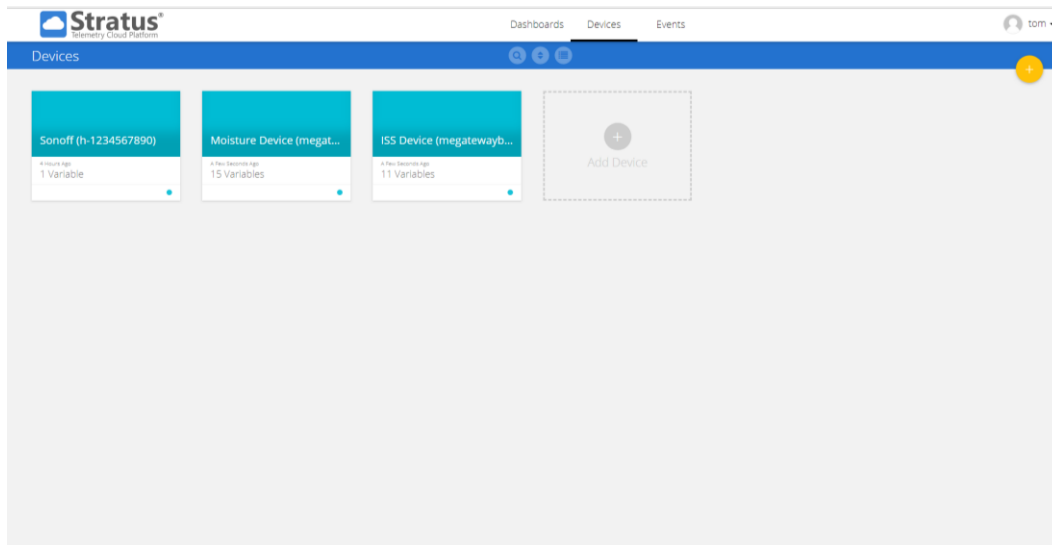
[Sign in to your account](#)

There are three levels of user. You will have been provided with usernames, passwords and the website address for sign in.

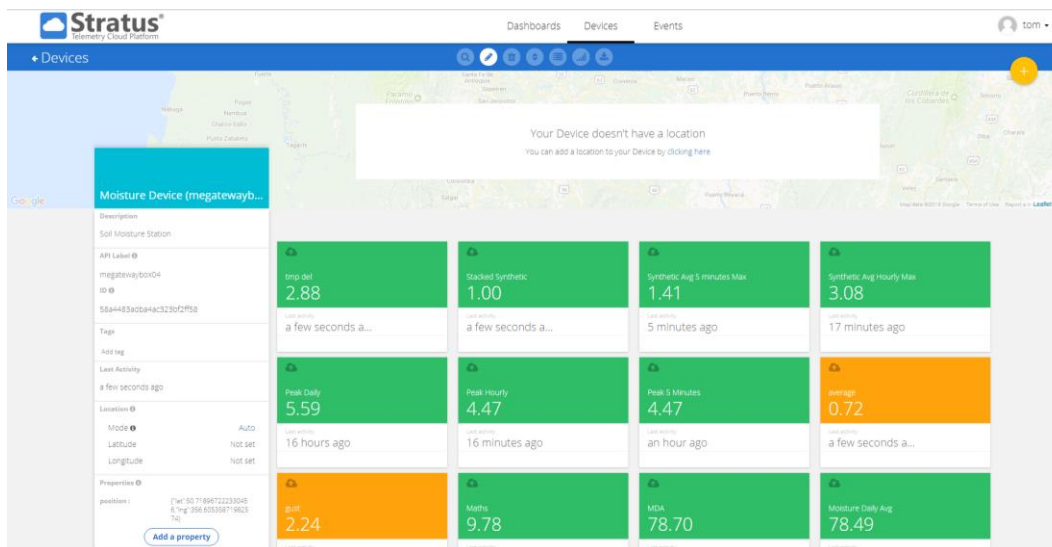
- **Manager**
 - Managers can do everything except creating, editing or deleting users and devices. To do that, contact Mantracourt.
- **Explorer**
 - Explorers can create, edit, view and delete dashboards and events. They can view the devices, variables and values, but can't edit or delete them.
- **Dashboards**
 - These users can only see all the dashboards of their organization but cannot change them.

Check Device

If you have manager or explorer status, click on **Devices** tab (at the top). Your device(s) should be here. (You will need to have started Stratus sending in LOG100 first, see above). Click on the device you want to check.



You will now see the variables that are delivered by this device.



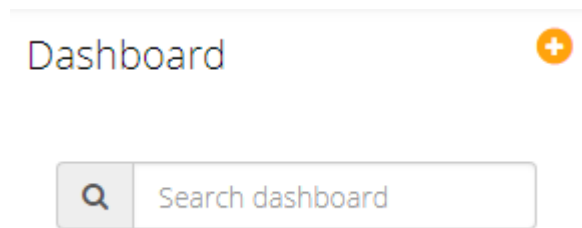
In the above picture the orange variables are delivered by the device and the green ones are 'synthetic' variables which are made by the user. They can take various forms including sums or averages of variables.

To start with it's a good idea just to check that the variables that you expect are there. There will be an extra variable called **Status**. This variable allows you to check on the status of all channels in LOG100. The higher the number shown by Status (0-100), the more severe the problem. This is decoded by using a dashboard widget. (See below)

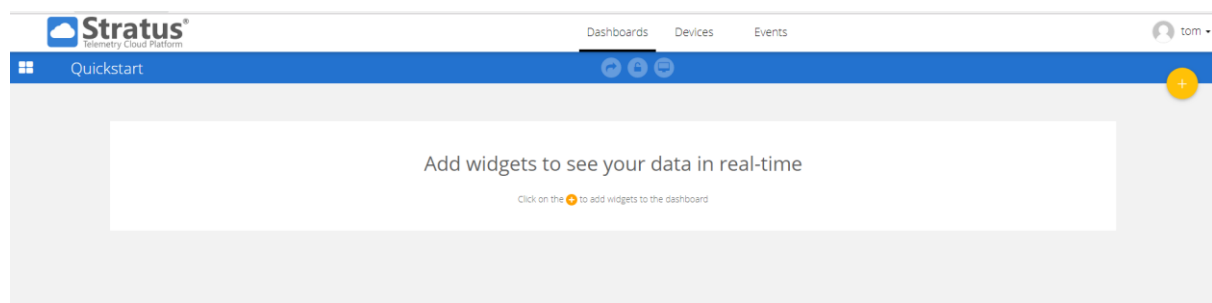
If you delete any variables you will permanently lose that data.

Create a Dashboard

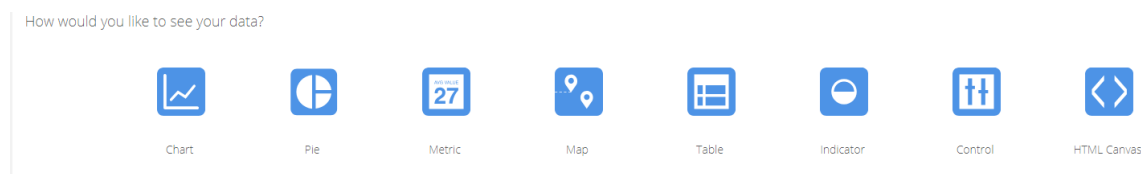
Dashboards allow easy viewing and analysis of your data. Click on the **Dashboards** tab then click the 'window' icon. This will show any already created dashboards.



Click the 'plus' sign to create a new dashboard. Name it and click 'tick'. Now click on your new dashboard from the list. You will see a page similar to this.



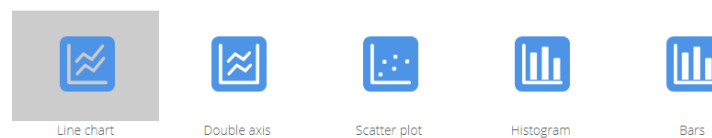
Widgets are different methods of displaying the data. Click the 'plus' sign to create a new widget.



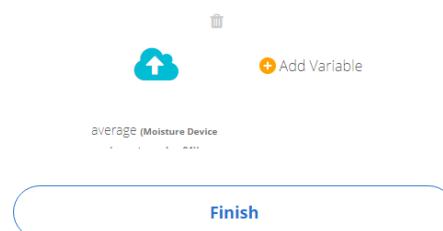
Hover over each option for a short description. For this guide we will look at **Charts** and **Indicators**.

Charts:

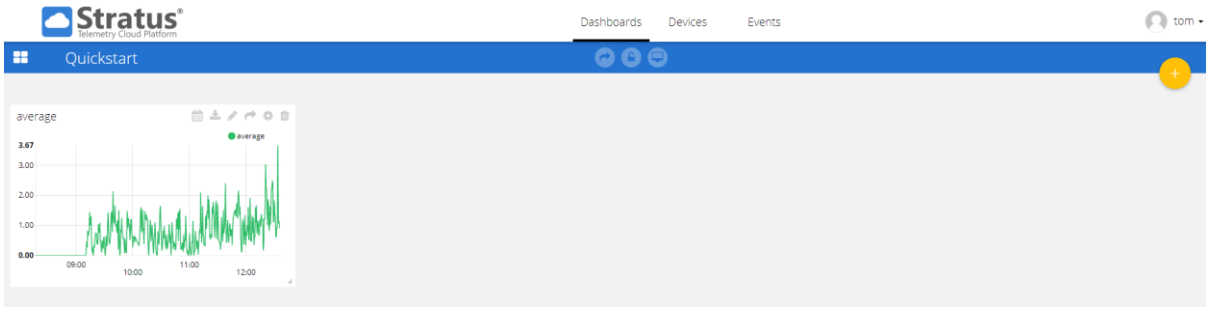
Select a type of widget:



Select variables



As shown, we have selected widget type: line chart and variable: average (from the moisture device). It is possible to add more variables at this point if required. The variables from more than one device can be displayed in the same chart. When you're ready, click finish.



We can resize the widget by grabbing the bottom right corner. Move the widget to where you want on the screen by clicking and holding the top of it. There are various settings available along the top of the widget. You can change the **Timerange** (this is only temporary until the page is reloaded, to change permanently use **Settings**), **Download** the chart's data, **Edit** the data source, **Share** the widget via a weblink, change the **Settings** or **Delete** the widget. Note: deleting the widget does not delete the data, this is fed from the Device(s).

The **Indicator** widget has a special type that uses the Status variable. This allows you create a widget which shows the most recent Status update and when it was received.

How would you like to see your data?



Chart



Pie



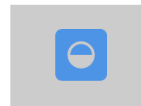
Metric



Map



Table



Indicator



Control



HTML Canvas

Select a type of widget:



On/Off



Gauge



Status Indicator



Tank

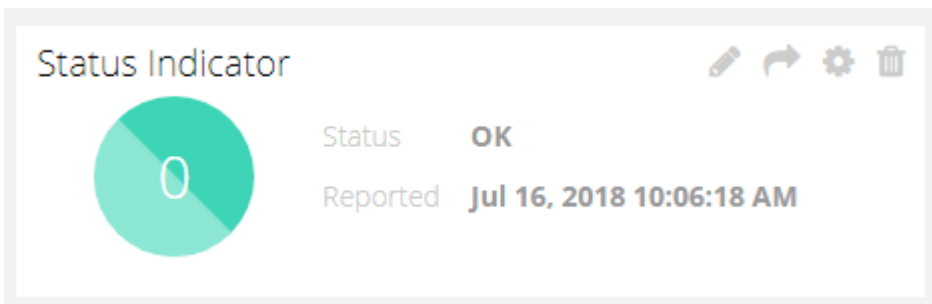
List of Devices to visualize



Moisture Device

Finish

This lets you monitor how the device is doing.



You can keep adding widgets until you have enough information displayed. Then you can **Lock** the Dashboard.



Click **Share** and you will get a link that you can share with anyone you want. They will be able to follow the link and view the dashboard that you have created. They will not be able to change anything or download any data.

You can add more **Dashboards** depending on your Stratus® plan.

Create an Event

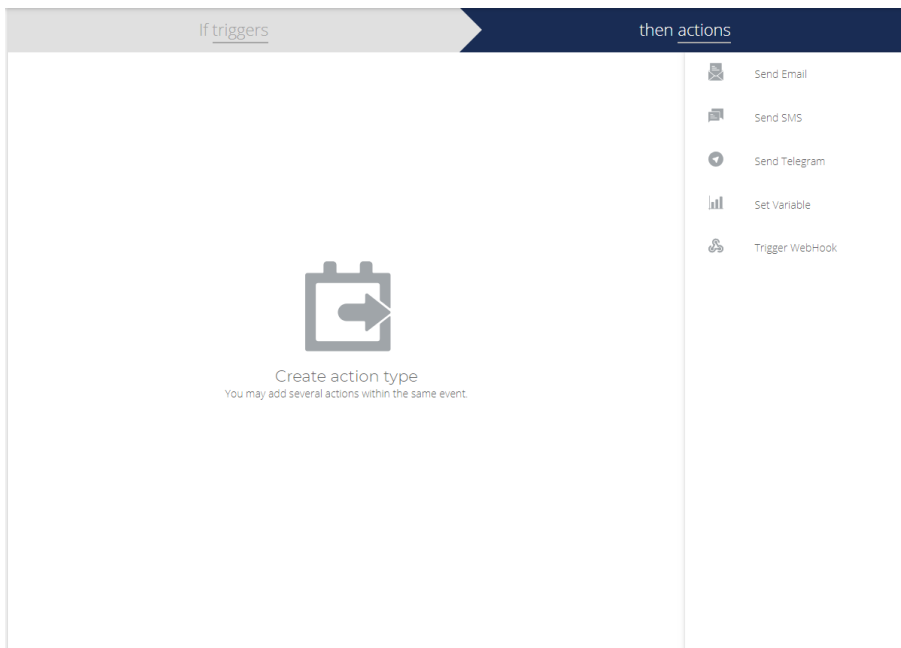
Events allow you to set triggers for text messages and emails etc based on variables.

Go to the **Events** tab and click on the 'plus' sign.

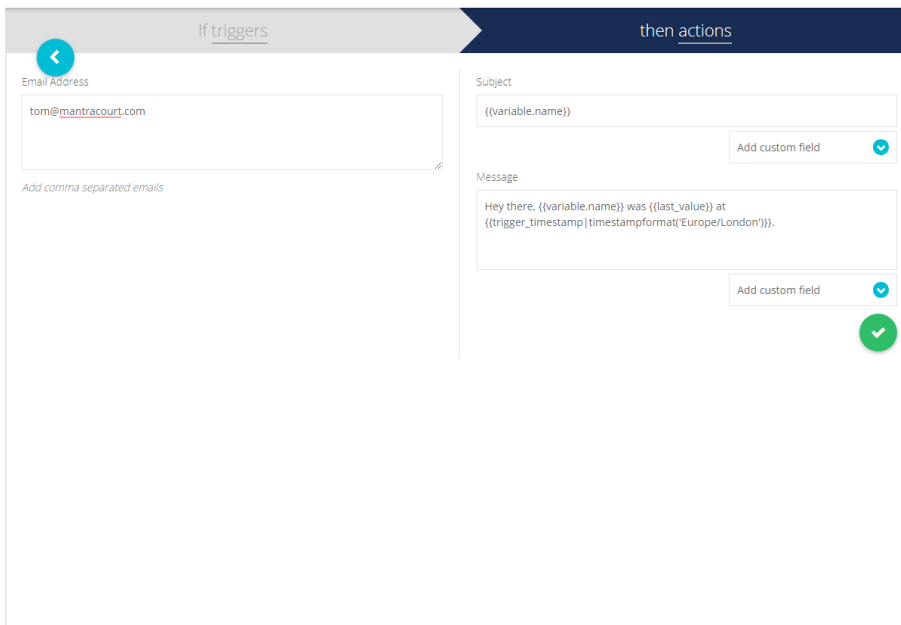
A screenshot of a configuration interface for setting event triggers. The interface is divided into two main sections: 'If triggers' (dark blue header) and 'then actions' (light grey header). Under 'If triggers', there is a 'Select variable(s)' field with a plus icon. Below it, a dropdown menu is open, showing options: 'Value', 'Have been inactive', 'Position', and 'Value'. The 'Value' option is selected. To the right of the dropdown is the word 'is'. Further right, another dropdown menu is open, showing options: 'Equal to', 'Not equal to', 'Greater than', 'Less than', 'Greater than or equal to', and 'Less than or equal to'. The 'Equal to' option is selected. To the right of this dropdown are two input fields: the first contains '10' and the second contains '0'. Below these fields is the word 'minutes' and a trash icon. At the bottom of the interface, there are two circular navigation arrows: a left arrow and a right arrow.

This page lets you set up the **trigger(s)** for the event. You select the variable and how it triggers. You can have multiple and/or triggers. Click the right arrow to move to the next page.

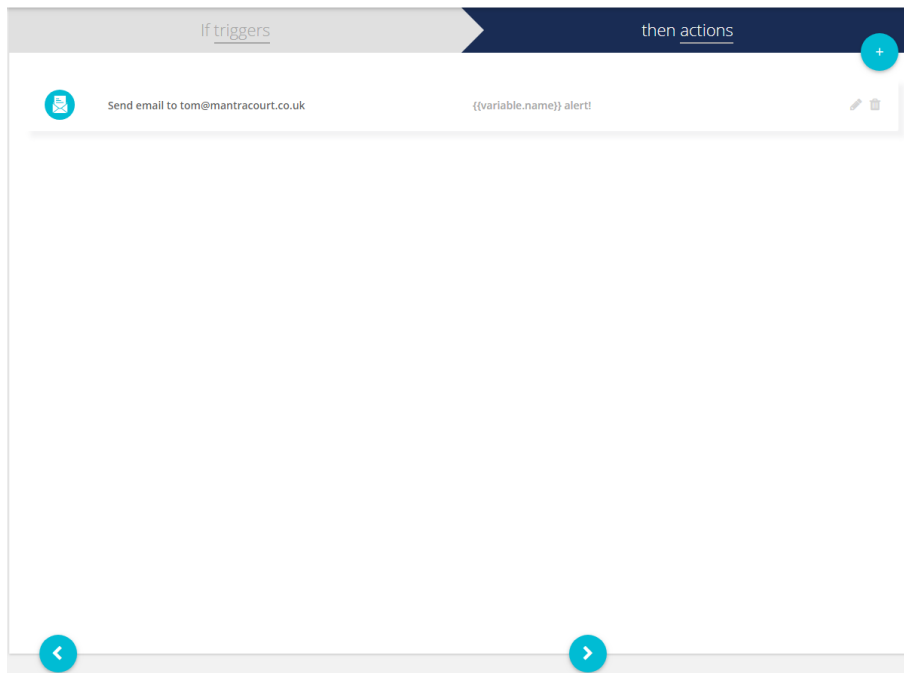
Click the plus sign to create an action type.



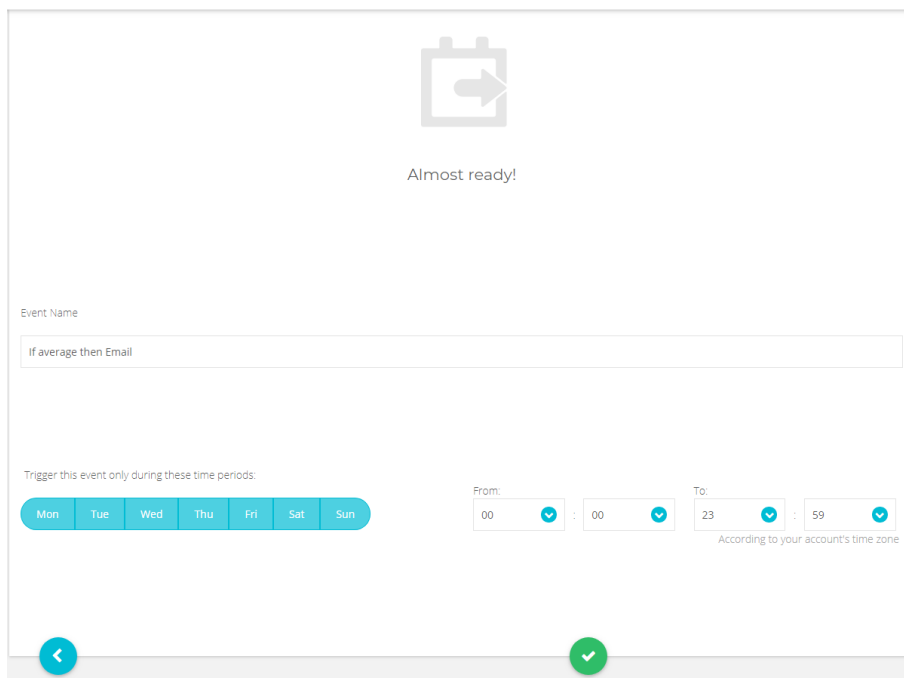
Here you select the action type then fill in the relevant parts. This includes setting the message contents using text and the **Custom Fields** to reference variables and times etc.



Click the right arrow again to see a summary:

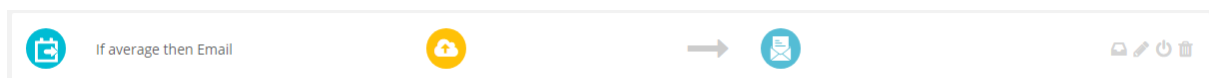


Clicking the pencil will allow you to edit the event. Click the right arrow again when you are happy.



Now you can set when you want the event to trigger and name it. Click the tick when you are happy.

The event will now be in the Events list.



You can hover over various parts in the summary and view the event log. It is also possible to edit from here and disable the event.